



Vacancy Schedule – January 2018

Building Name	Building Address	Usage Type	Unit No	SQM	Gross Rental/m ²	ESC	Availability
Gauteng							
Clubview Corner	Cnr Harvard Avenue & Lyttelton Road, Clubview, Centurion	Retail	Shop G03	178	R 160.00	10%	01 Feb 2018
The Ridge	Cnr Paul Kruger & Mozart Avenue, Honeydew Ridge	Retail	Shop GF02	125	R 150.00	10%	Immediately
		Retail	Shop GF23	40	R 180.00	10%	Immediately
		Retail	Shop G20	88	R 100.00	10%	Immediately
		Office	Office FF18B	43	R 120.00	10%	Immediately
Vereeniging	7 Richacres, Vereeniging	Church/Offices		912	R 30.00	10%	Immediately
Sebokeng	Moshweshwe Street, Sebokeng South	Retail	Shop 567	430	R 120.00	10%	Immediately
		Retail	Shop 14	1564	R 80.00	10%	Two Month's Notice
		Retail	Shop 12	500	R 110.00	10%	Two Month's Notice
The Palms	512 Nupen Crescent, Midrand	Office	215FF	381	R 70.00	10%	Immediately
		Office	216GF1	224	R 80.00	10%	Immediately
		Office	216FF3	237	R 70.00	10%	Immediately
		Office	216FF4	241	R 70.00	10%	Immediately
Free State							
Mega Park	30 Curie Avenue, Hospitaal Park, Bloemfontein	Retail	Shop 2A	301	R 130.00	10%	Immediately
Middestad Mall	Cnr Burger & Charles Streets, Bloemfontein	Retail	Shop B29C	233	R 120.00	10%	Immediately
		Retail	Shop C15A	432	R 140.00	10%	01 Aug 2018
		Retail	Shop C16	203	R 140.00	10%	01 Aug 2018
		Office	C 19A	1042	R 130.00	10%	01 Aug 2018
		Office	C 19B	550	R 140.00	10%	01 Aug 2018
		Office	C 19C	633	R 140.00	10%	01 Aug 2018
		Medical Suites	MS12	42.3	R 5 500/ month	10%	01 Mar 2018



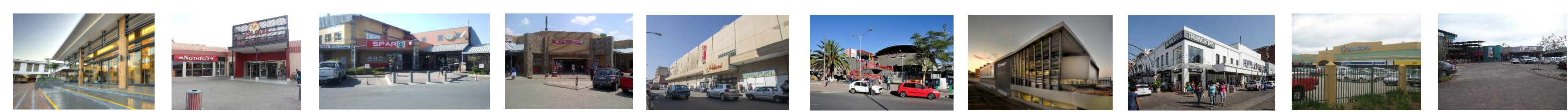
Vacancy Schedule – January 2018

Building Name	Building Address	Usage Type	Unit No	SQM	Gross Rental/m ²	ESC	Availability
Free State							
Middestad Mall	Cnr Burger & Charles Streets, Bloemfontein	Food Court Redevelopment	Food 1	314	R 140.00	9%	01 Aug 2018
			Food 2	61	R 200.00	9%	01 Aug 2018
			Food 3	48	R 200.00	9%	01 Aug 2018
			Food 4	60	R 200.00	9%	01 Aug 2018
			Food 5	237	R 160.00	9%	01 Aug 2018
			Food 6	239	R 120.00	9%	01 Aug 2018
			Food 7	54	R 200.00	9%	01 Aug 2018
			Food 8	87	R 180.00	9%	01 Aug 2018
Western Cape							
Parow Valley Centre	Cnr Frederik & Mark Streets	Retail	Shop G14	252	R 135.00	10%	09 Mar 2018
Macassar Shopping Centre (Redevelopment)	Cnr Burg Street & Link Avenue	Retail	Shop 21	42	R 180.00	10%	01 Mar 2018
		Retail	Shop 22	150	R 160.00	10%	Immediately
		Retail	Shop 24	47	R 180.00	10%	01 Mar 2018
		Retail	Shop 26	219	R 160.00	10%	Immediately
		Retail	Shop 11B	63	R 180.00	10%	Immediately
Retail	Stand Alone Unit	725	R 100.00	10%	01 Mar 2018		
St George's Square	Cnr 3 rd Street & Knysna Road, George	Retail	Shop 03	334	R 60.00	10%	Immediately
		Retail	Shop 36	278	R 80.00	10%	Immediately
		Retail	Shop FF03 First Floor	68	R 80.00	10%	Immediately
		Retail	Shop FF04 First Floor	71	R 80.00	10%	Immediately
Nyanga Junction	Duinefontein Road, Manenberg	Retail	Shop 34	48	R 220.00	10%	Immediately
		Retail	Shop 33	71	R 220.00	10%	Immediately
		Retail	Kiosk NJ 4	4	R 5 000.00	10%	Immediately



Vacancy Schedule – January 2018

Building Name	Building Address	Usage Type	Unit No	SQM	Gross Rental/m ²	ESC	Availability
Kwazulu Natal							
Mkuze Corner	Cnr Eagle Ave & Falcon Street, Mkuze	Retail	Shop 4B	150	R 90.00	10%	Immediately
Westville Junction	31-34 Westville Road, Westville	Retail	Shop 07B	58	R 300.00	10%	Immediately
Richmond Shopping Centre	Cnr Chilley & Nelson Streets, Richmond	Retail	Shop 28A	316	R 90.00	10%	01 Mar 2018
		Retail	Shop 16	227	R 70.00	10%	01 Feb 2018
		Store	Storeroom 3A	82	R 30.00	10%	Immediately
		Retail	Shop 4A	35	R 120.00	10%	01 Jan 2018
		Retail	Shop 07	57	R 220.00	10%	Immediately
		Retail	Shop 11	147	R 110.00	10%	01 Feb 2018
Eastern Cape							
Deals House	Cnr Buffalo & Terminus Streets, East London CBD	Office	1 st Floor (Sub-divisible)	1308	R 120.00	10%	Immediately
		Office	2 nd Floor (Sub-divisible)	616	R 120.00	10%	Immediately
		Office	4 th Floor (Sub-divisible)	558	R 120.00	10%	Immediately
		Office	5 th Floor (Sub-divisible)	558	R 120.00	10%	Immediately
		Easy Office	Easy Office Units*	From 15m ²	R 200.00	10%	Immediately
* Easy Office: Fully furnished, turnkey offices. 16 x 15-24 sqm offices, rentals from R 3 000 per month ex VAT.							
Northern Cape							
Kim Park	Cnr Lennox & Chapel Street, Kimberley	Retail	Mezzanine (1 st Floor)	796	R 70.00	10%	Immediately
		Retail	Shop 1CA	207	R 75.00	10%	Immediately
		Retail	Shop 31 (Restaurant)	322	R 75.00	10%	Immediately
Sibilo Shopping Centre	Cnr R325 & R 385, Postmasberg	Retail	Shop B09b	25	R 150.00	10%	Immediately
		Retail	Shop A06	150	R 150.00	10%	Immediately
		Retail	Shop B07/08	50	R 250.00	10%	Immediately
		Retail	Shop C09	50	R 170.00	10%	Immediately
		Office	Office 01	60	R 85.00	10%	Immediately



Vacancy Schedule – January 2018

Building Name	Building Address	Usage Type	Unit No	SQM	Gross Rental/m ²	ESC	Availability
Limpopo							
Masingita Shopping Centre	Main Road, Giyani	Retail	Shop 8B	297	R 100.00	10%	01 Feb 2018
		Retail	Shop 6B	101	R 165.00	10%	01 Jan 2018
Mala Plaza Shopping Centre	Main Road, Malamulele	Retail	Shop 09	124	R 175.00	10%	01 Feb 2018
		Retail	Shop 5A	309	R 170.00	10%	01 Feb 2018
		Retail	Shop 21B	168	R 160.00	10%	01 Jan 2018

- Rentals quoted are for premises on an as is basis.
- Tenant installations offered and rentalised accordingly.
- All figures quoted are exclusive of VAT.
- Broker enquiries welcome.
- Rentals quoted are subject to change without notification.